



601 4th Street SE De Smet, SD 57231

PROPERTY HIGHLIGHTS

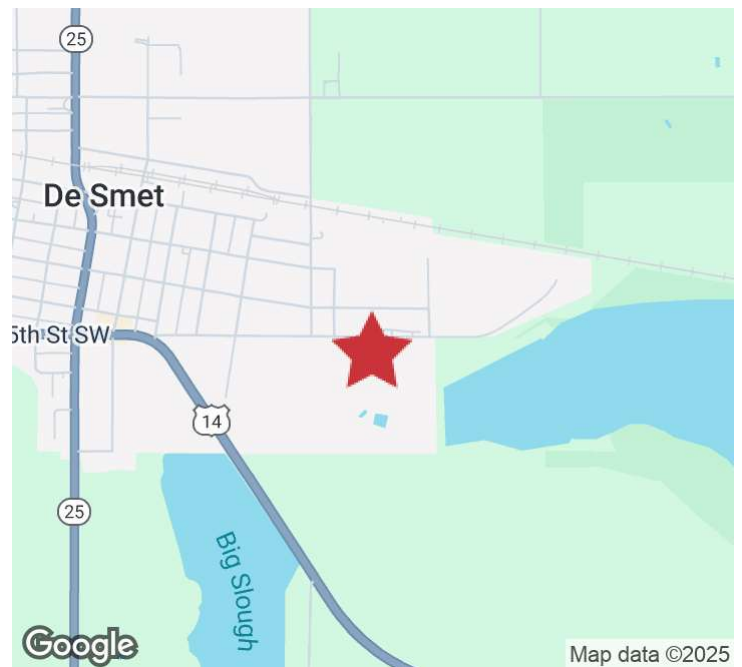
- In floor heat, air conditioned, and epoxy floors throughout
- 1,911 SF of office with mezzanine storage above
- One overhead door (14' x 14')
- 18' side wall height, 21' at peak
- 25' x 50' column spacing
- 220V, three-phase electrical service
- Excess land for outside storage
- Zoning: Industrial
- Built in 2010

LOCATION DESCRIPTION

Located in the De Smet Industrial Park

Area Neighbors: DeSco, Lyle Signs, UltiMed, GCC Ready Mix, American Engineered Products

Sale Price	\$799,900 (\$79.99 PSF)
Lease Rate (NNN)	\$7.50 SF/YR
Building SF	10,000 SF
Lot Size	2 AC (87,120 SF)



GREGG BROWN, MBA, SIOR
Senior Vice President, COO
gbrown@naisiouxfalls.com
605.906.0394

2500 W. 49th St. Suite 100
Sioux Falls, SD 57105
605.357.7100
naisiouxfalls.com

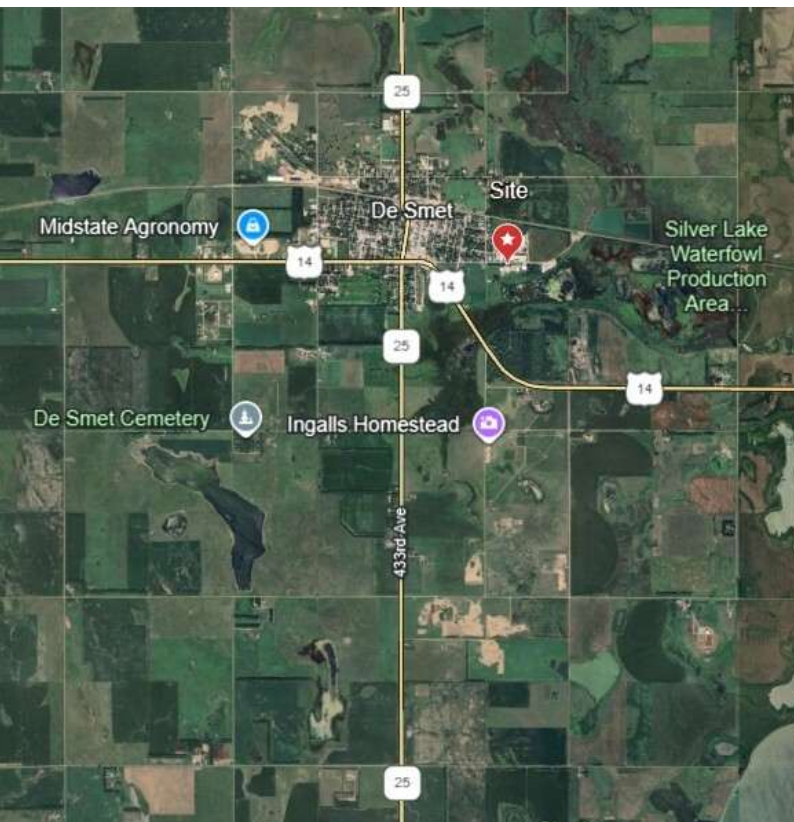
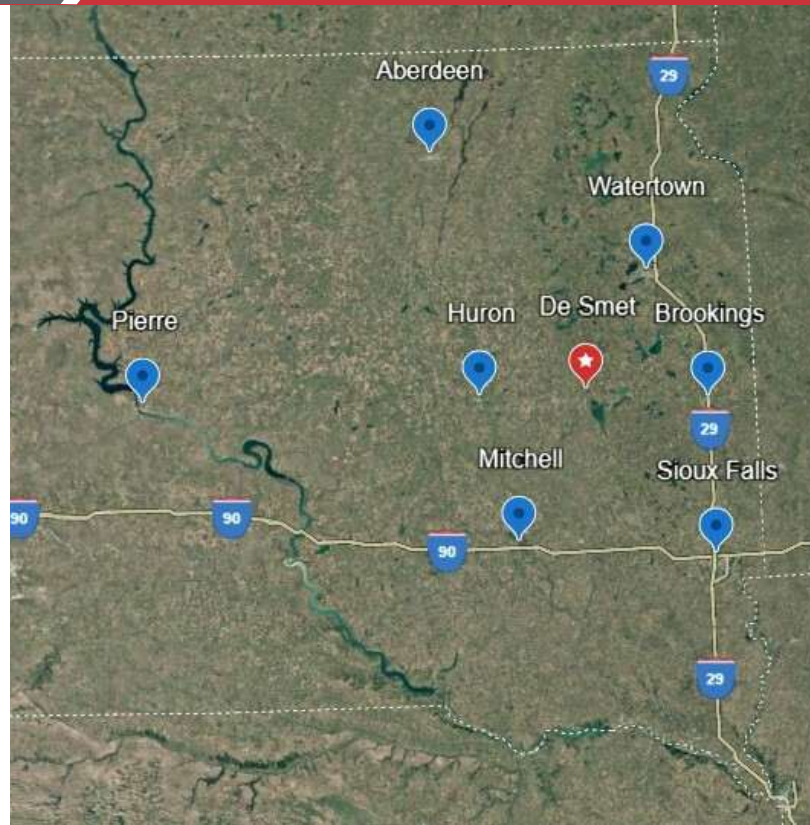
LOCATION

601 4TH STREET SE
De Smet, SD 57231

FOR SALE & LEASE
Industrial Property

LOCATION OVERVIEW

De Smet, South Dakota, is a historic small city located in Kingsbury County in the east-central region of the state. Known as the hometown of Laura Ingalls Wilder, De Smet is surrounded by rich agricultural landscapes and offers a strong sense of community. The city is situated along U.S. Highway 14, providing convenient access to nearby towns and regional hubs. De Smet lies just 30 miles west of Huron, a larger city that serves as a regional center for shopping, healthcare, and employment opportunities, and about 41 miles west of Brookings and Interstate 29, a major north-south corridor through the state. This location allows residents and visitors to enjoy the charm of a smaller community while benefiting from the services and amenities of nearby urban areas.



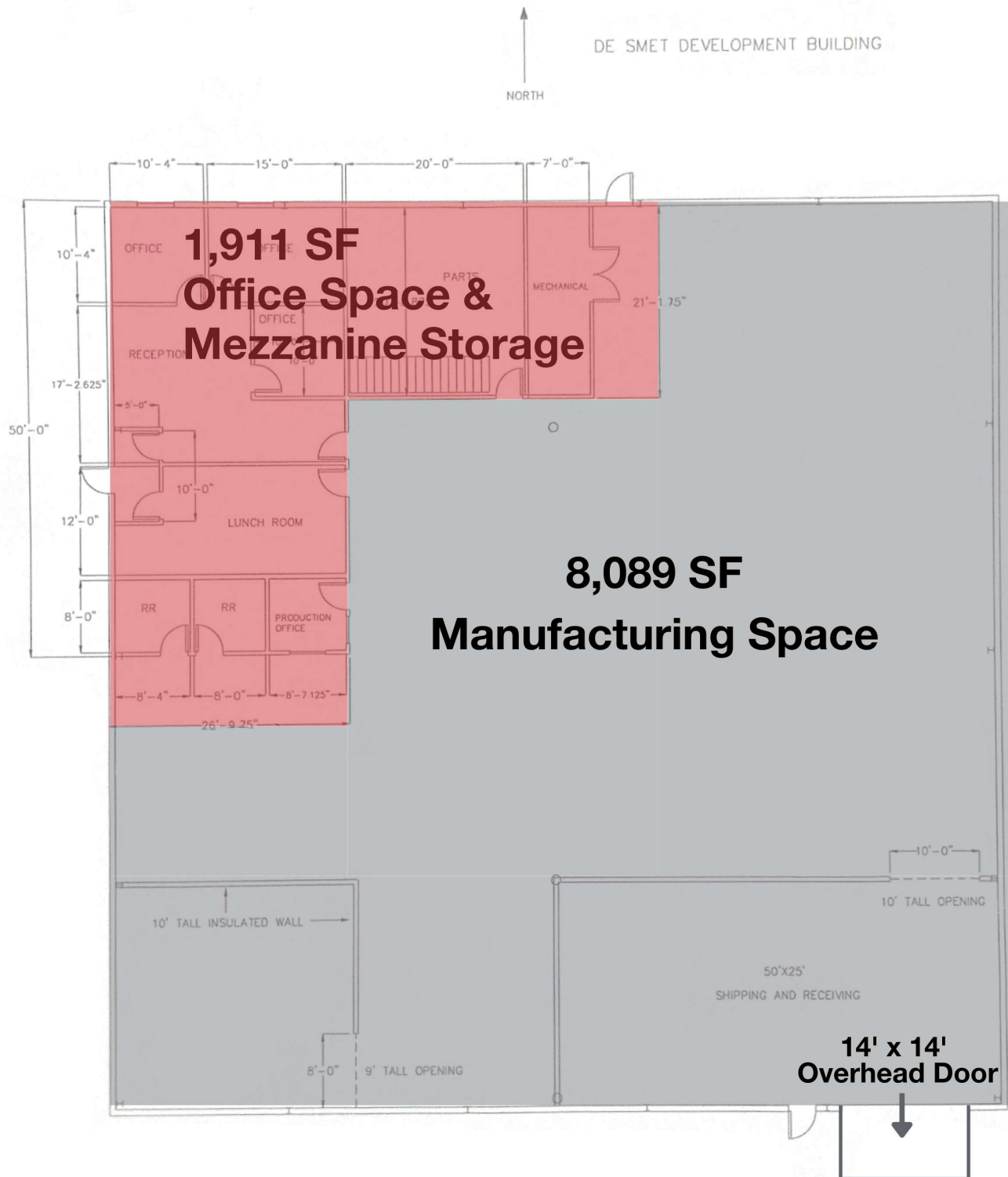
FLOOR PLANS

601 4TH STREET SE

De Smet, SD 57231

FOR SALE & LEASE

Industrial Property



PHOTOS

601 4TH STREET SE
De Smet, SD 57231

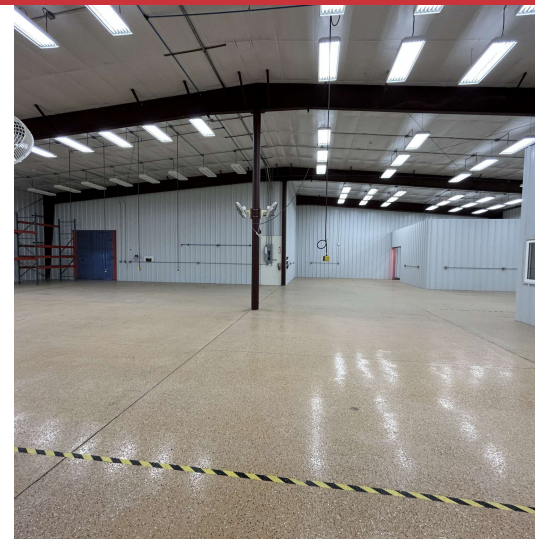
FOR SALE & LEASE
Industrial Property



ADDITIONAL PHOTOS

601 4TH STREET SE
De Smet, SD 57231

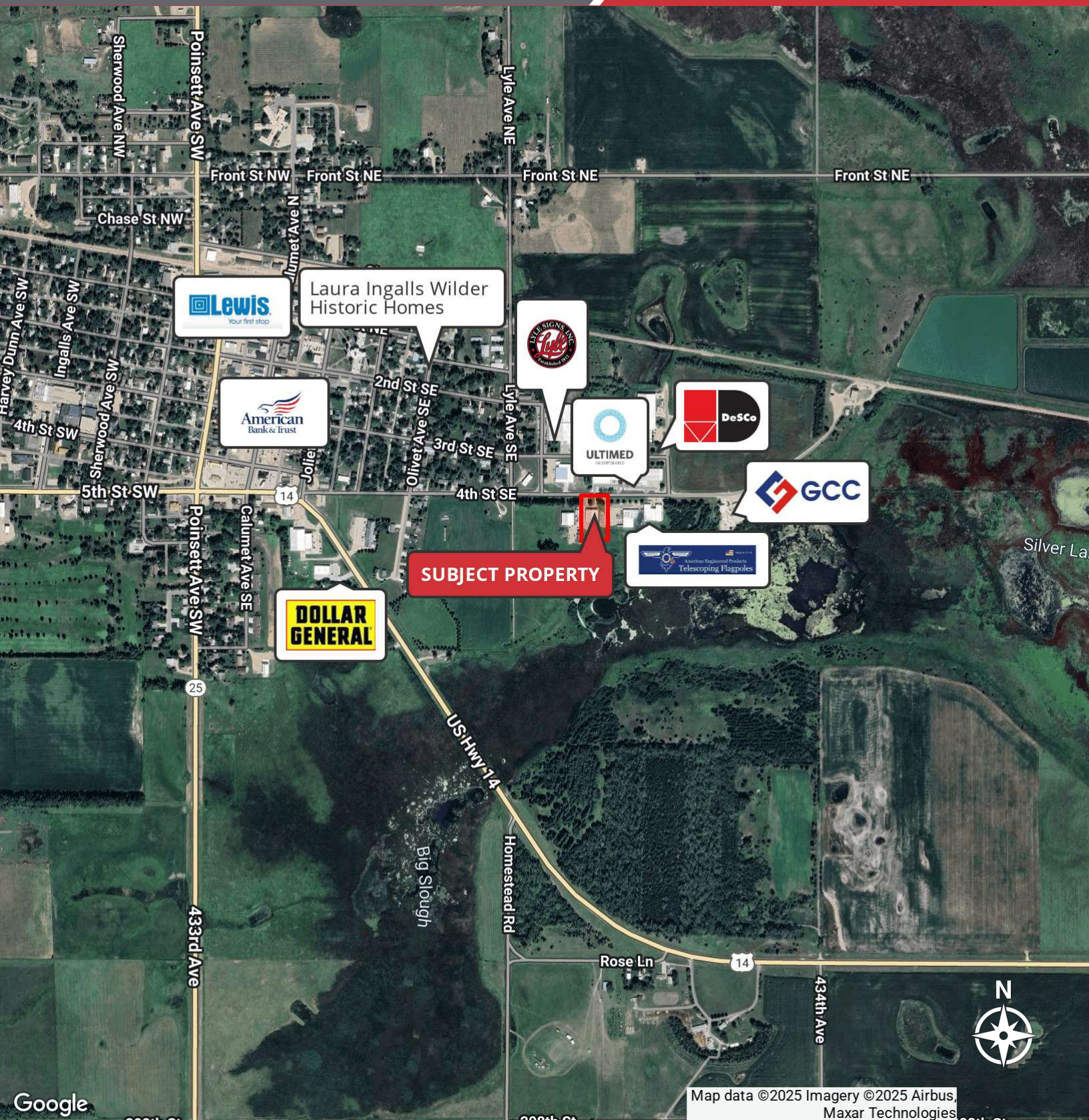
FOR SALE & LEASE
Industrial Property



AERIAL

601 4TH STREET SE
De Smet, SD 57231

FOR SALE & LEASE
Industrial Property



Map data ©2025 Imagery ©2025 Airbus,
Maxar Technologies